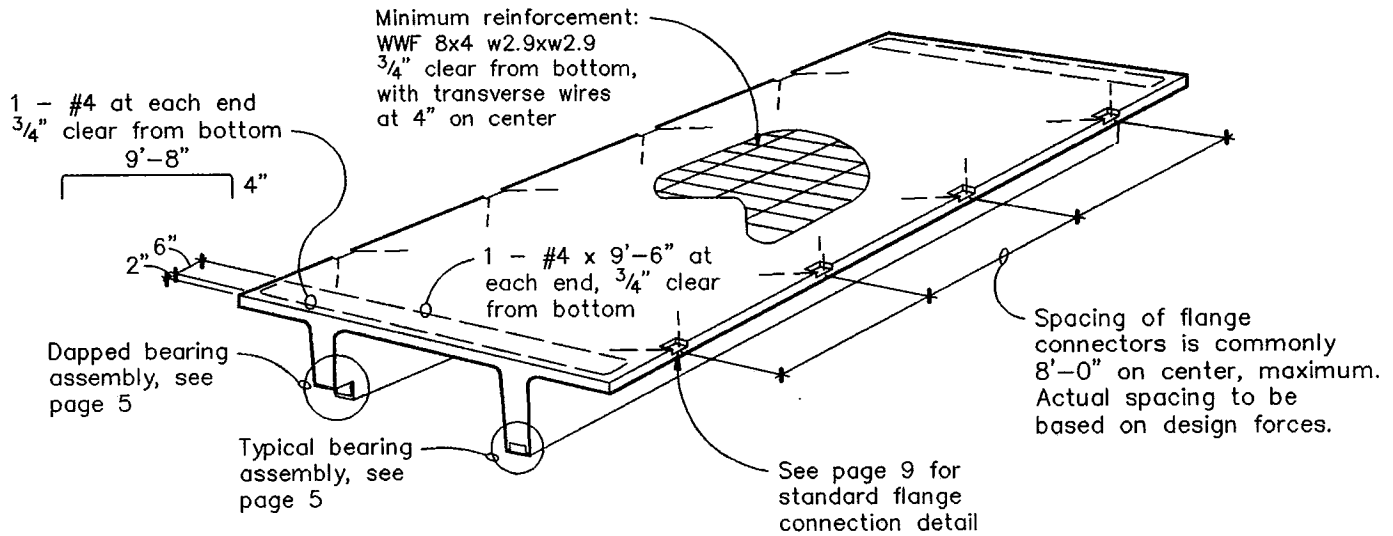
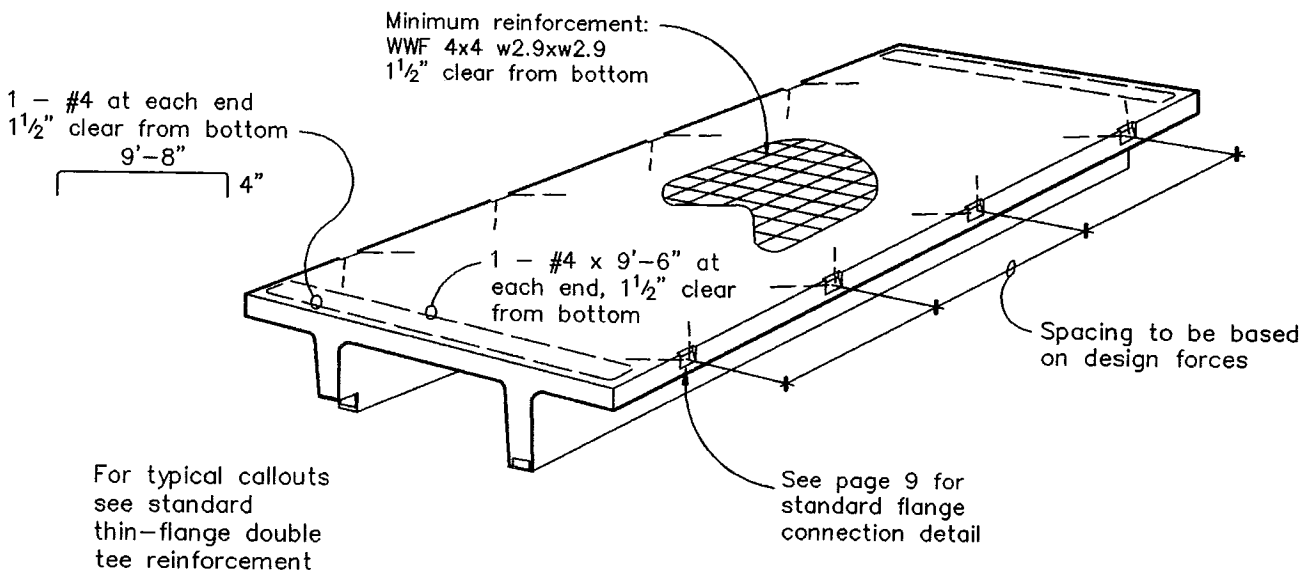




STANDARD THIN-FLANGE DOUBLE TEE REINFORCEMENT



STANDARD THICK-FLANGE DOUBLE TEE REINFORCEMENT



Note: Prestressing strands and shear reinforcement are not shown. See Concrete Technology Corporation's "10 Foot Wide Double Tee Design Criteria & Span-Load Tables" for information on prestressing strands and shear reinforcement.