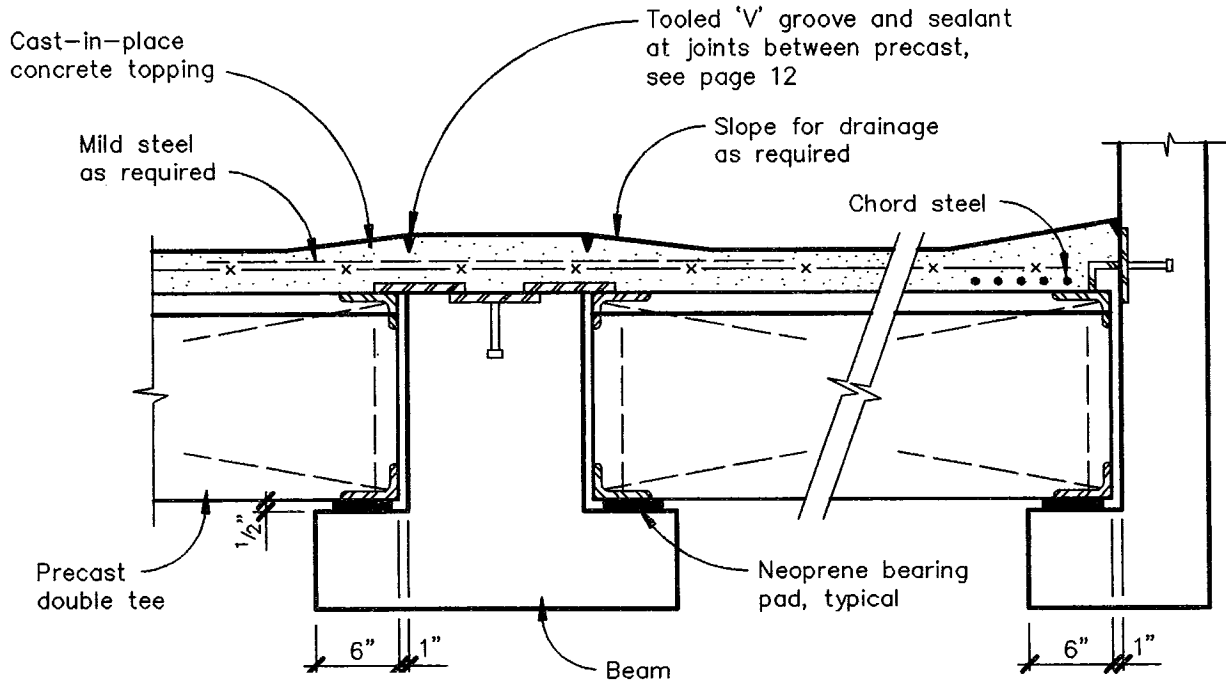
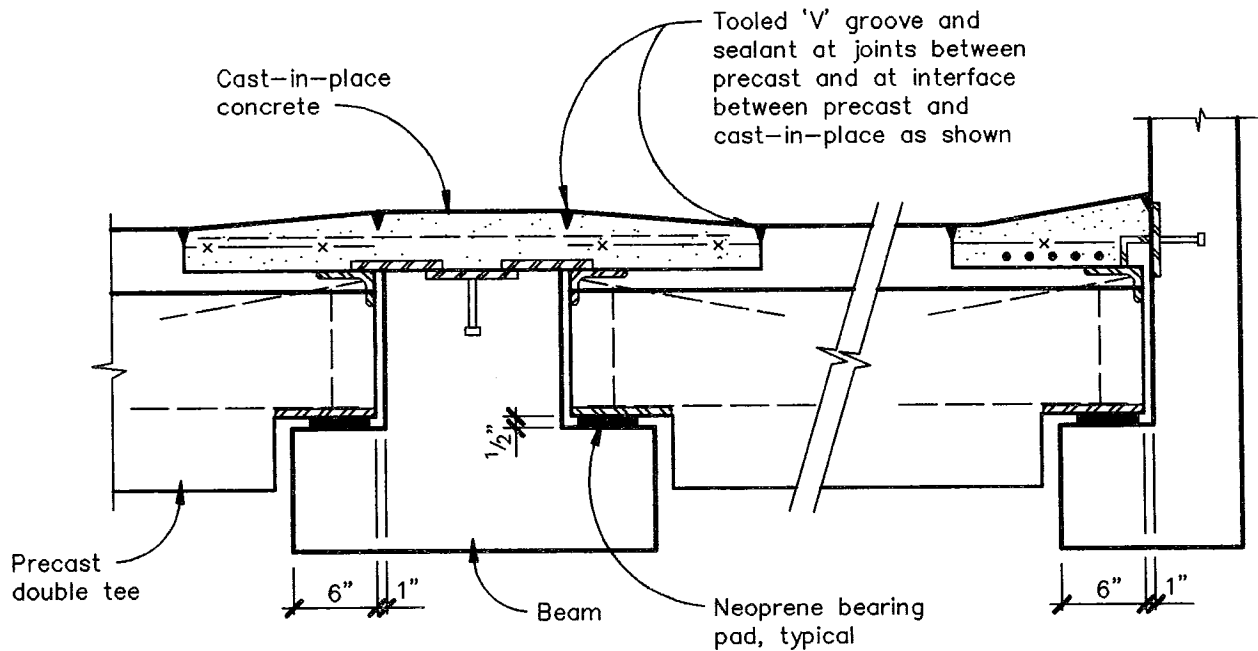




BEARING AND END CONNECTION DETAILS



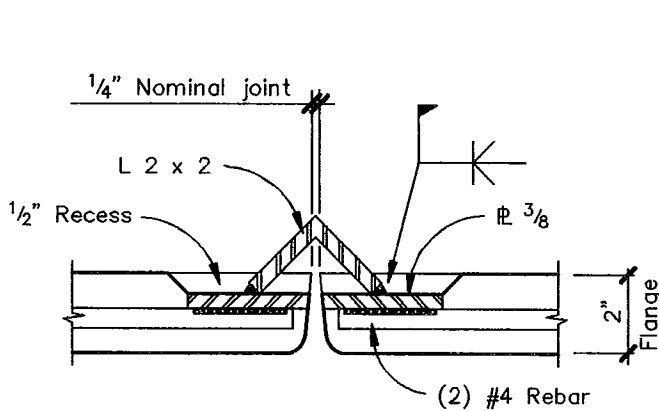
THIN-FLANGE (TOPPED) DOUBLE TEE



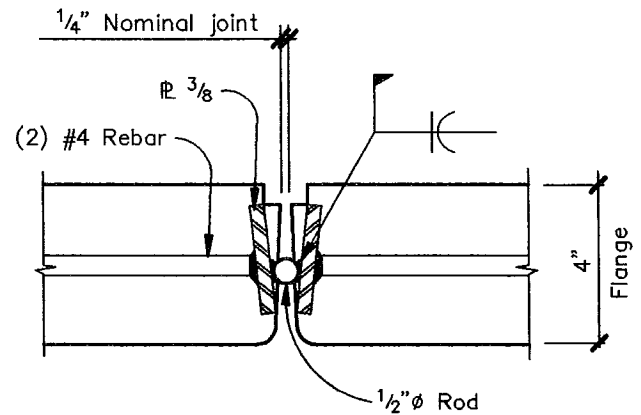
THICK-FLANGE DOUBLE TEE



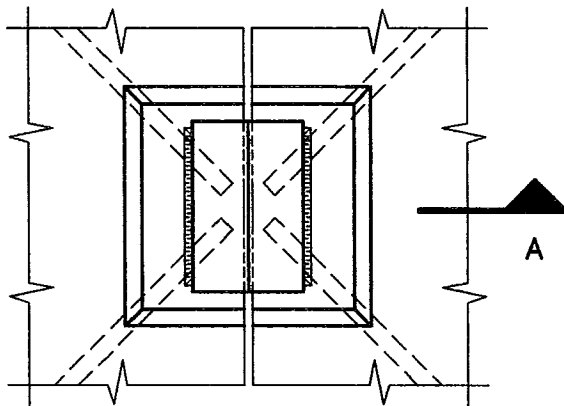
STANDARD FLANGE CONNECTIONS



SECTION - A

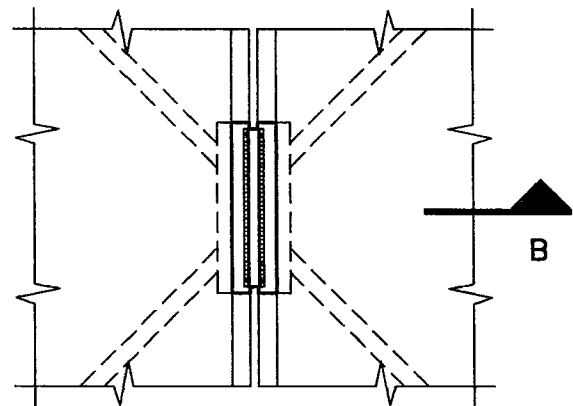


SECTION - B



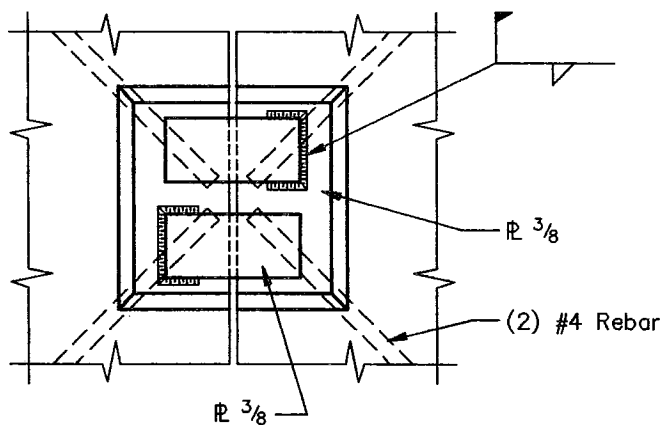
PLAN

THIN-FLANGE CONNECTION



PLAN

THICK-FLANGE CONNECTION



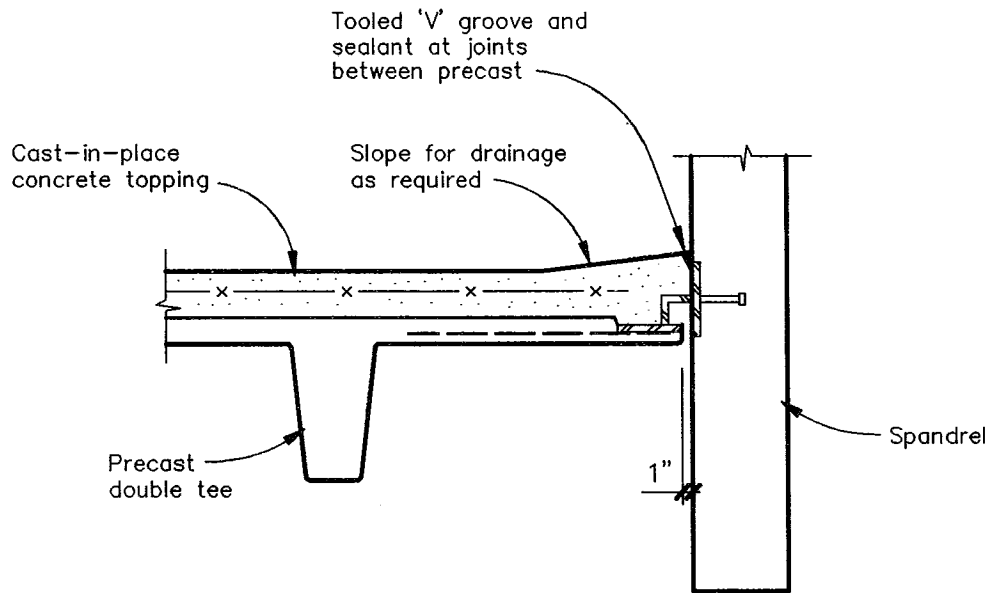
PLAN AT ISOLATION JOINT

(Connection provides no diaphragm shear transfer)

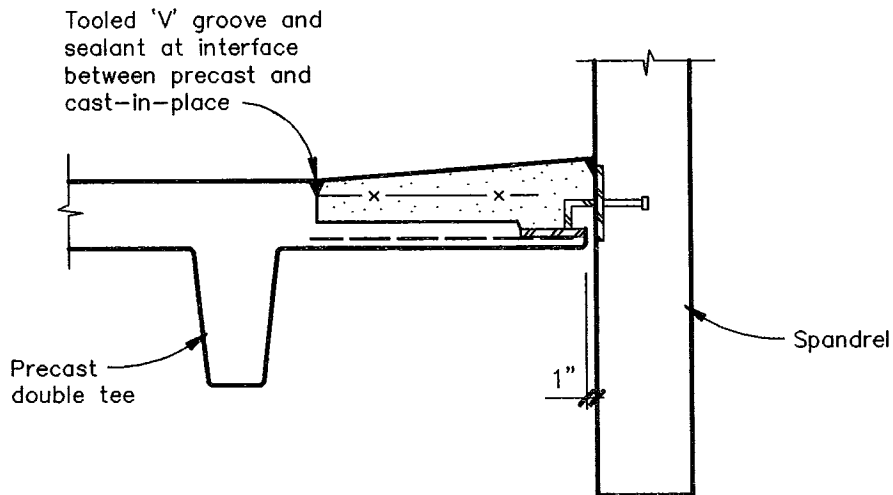
Note: Common spacing of flange connections is 8'-0" on center. Engineer of record should confirm actual spacing based on anticipated loads and system requirements. Reference PCI Design Handbook, Chapter 3, for additional information on connection and diaphragm design.



EDGE DETAILS



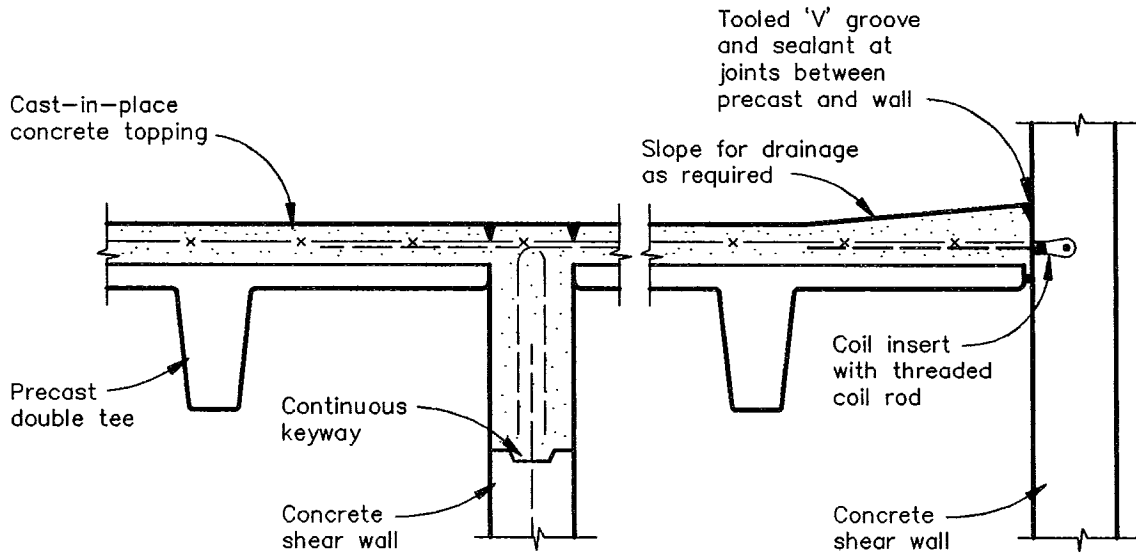
THIN-FLANGE (TOPPED) DOUBLE TEE



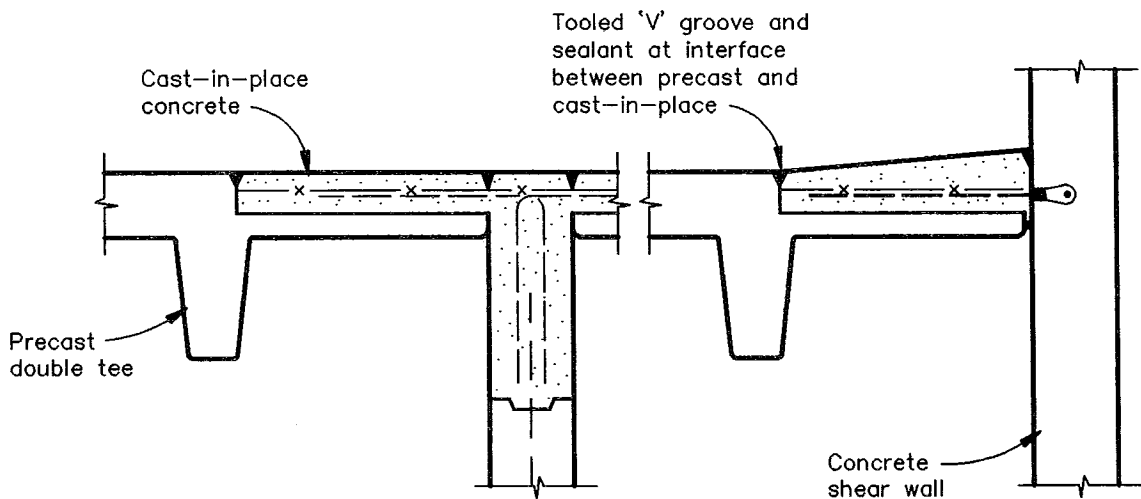
THICK-FLANGE DOUBLE TEE



EDGE DETAILS



THIN-FLANGE (TOPPED) DOUBLE TEE

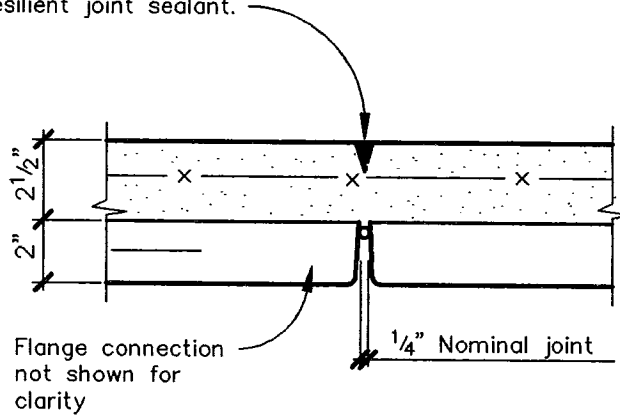


THICK-FLANGE DOUBLE TEE



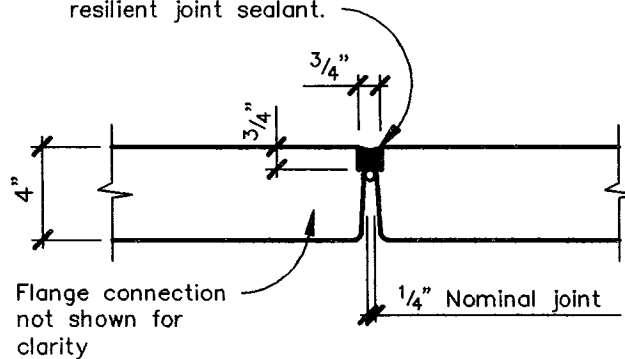
WATERPROOFING / JOINT DETAILS

Tooled 'V' groove in topping slab at all joints between double tees. $\frac{1}{2}$ " wide and 1" deep. Install resilient joint sealant.



THIN-FLANGE (TOPPED) DOUBLE TEE

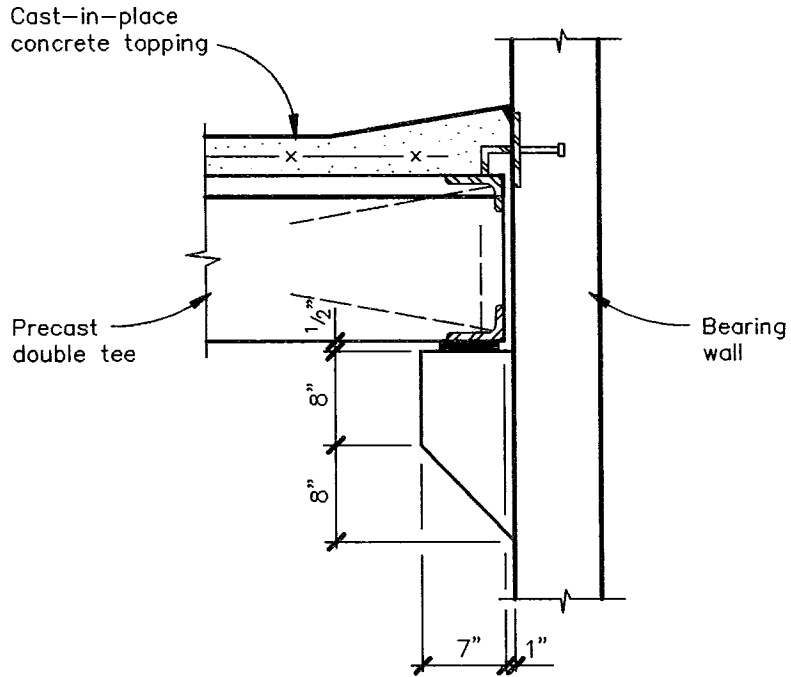
Continuous preformed joint profile in edges of all double tees. Install resilient joint sealant.



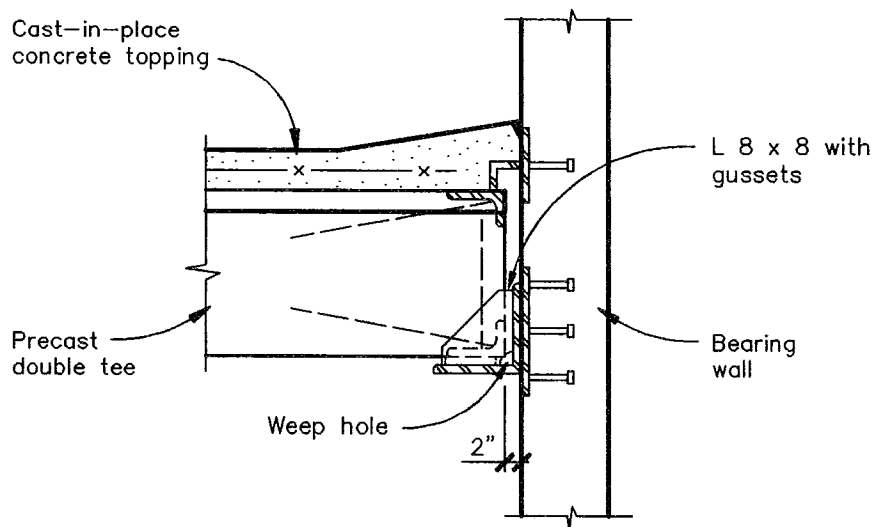
THICK-FLANGE DOUBLE TEE



CORBEL DETAILS



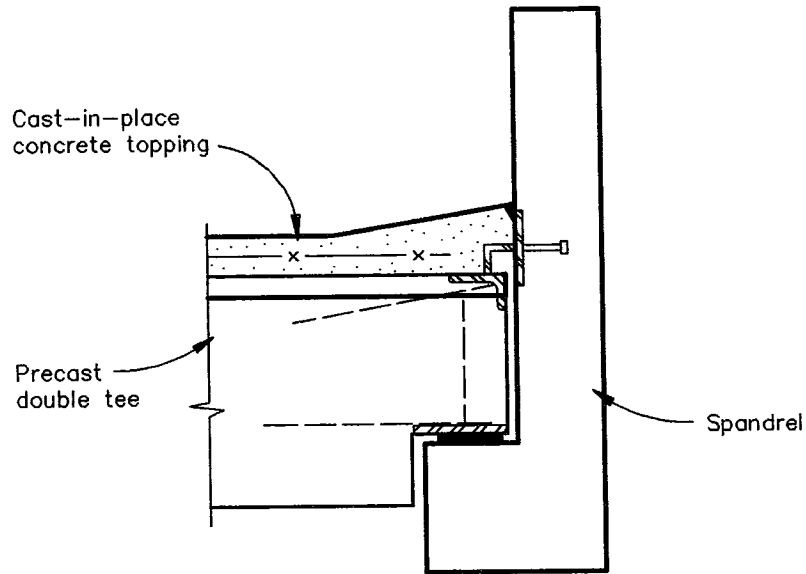
DOUBLE TEE ON CONCRETE CORBEL



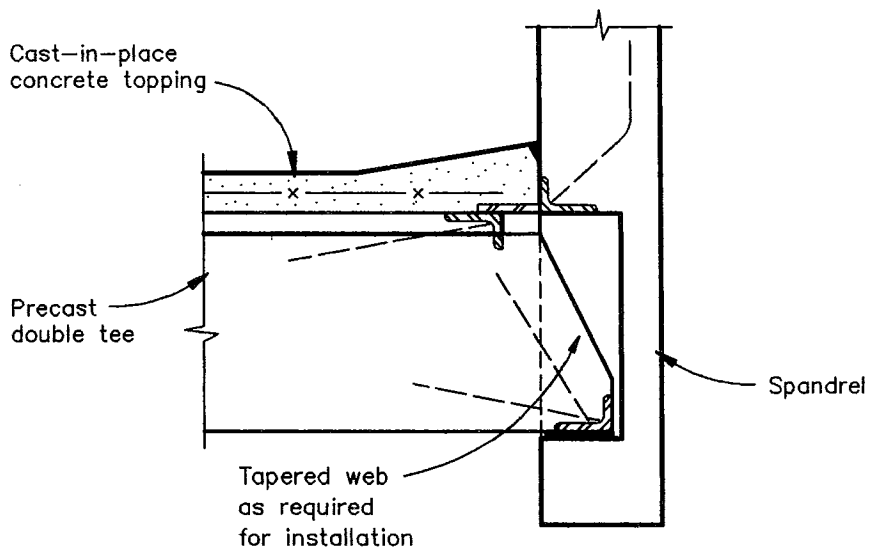
DOUBLE TEE ON STEEL CORBEL



SPANDREL DETAILS



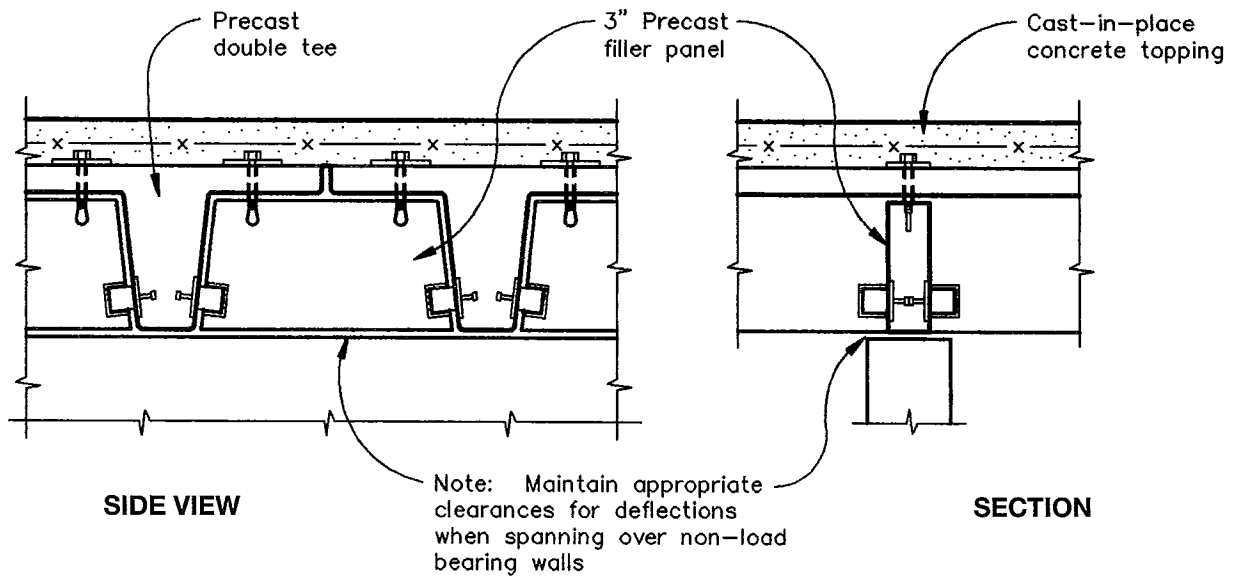
DOUBLE TEE ON TYPICAL SPANDREL



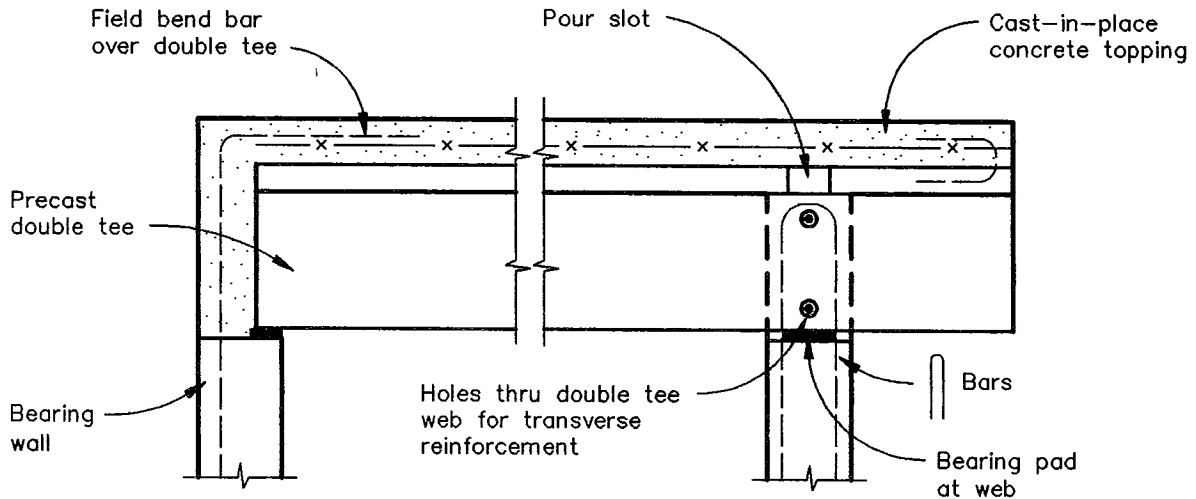
DOUBLE TEE ON POCKETED SPANDREL



DETAILS OF FILLERS BETWEEN WEBS



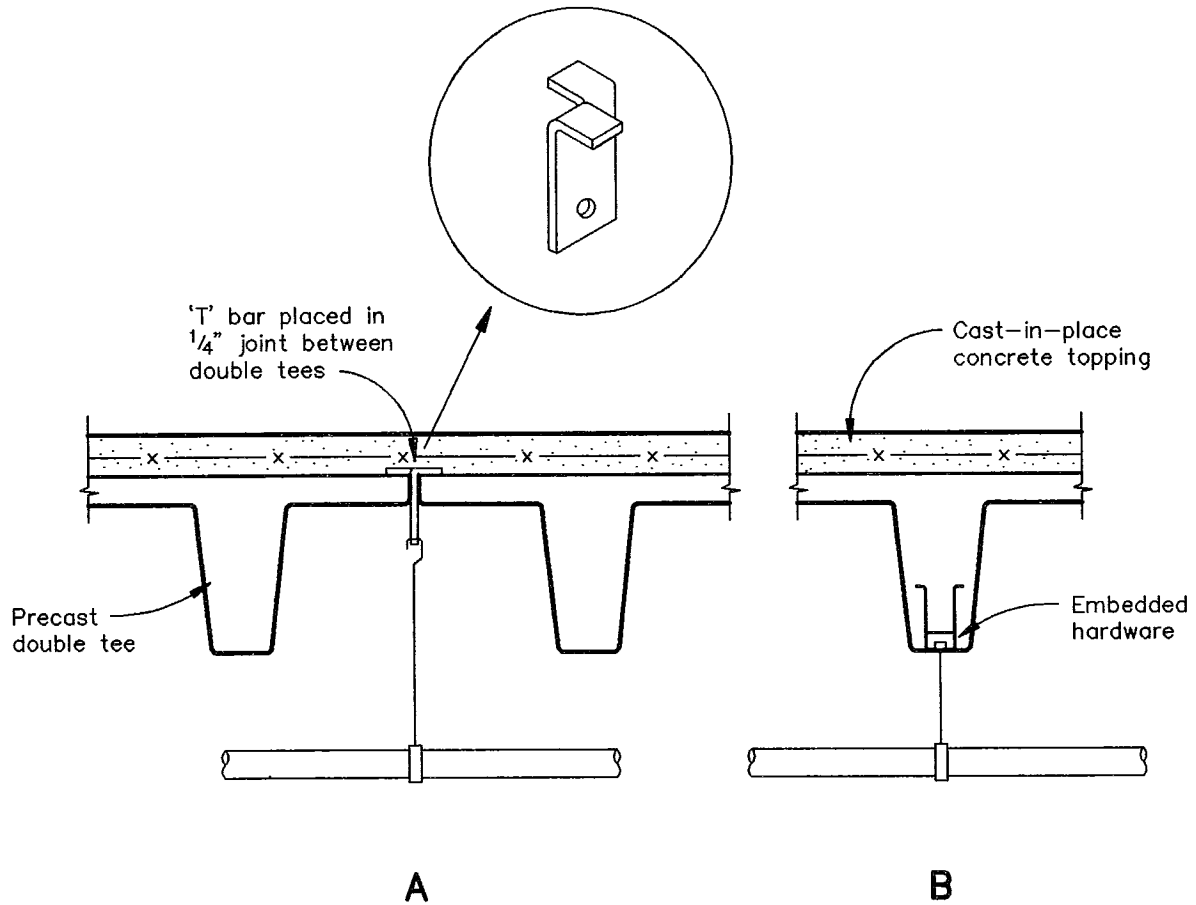
PRECAST FILLER PANEL



CAST-IN-PLACE FILLER



HANGER DETAIL



HANGER FOR PIPES OR CEILINGS

- Notes:
1. Hangers can also be installed by field drilling into flange before or after topping is placed.
 2. Field drilling into double tee web is not recommended due to potential damage to prestressing. If attachment to web is required, contact CTC for alternate methods.