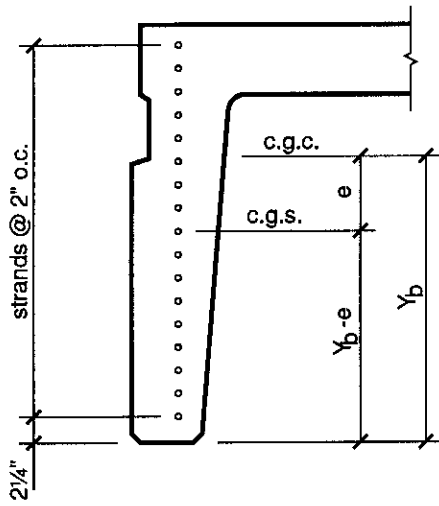
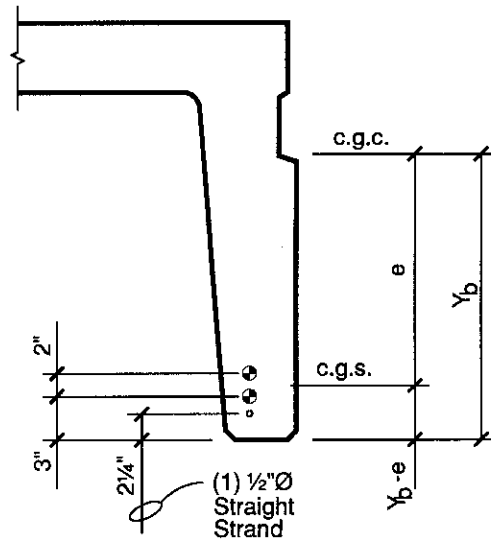




STRAND LOCATION FOR PRESTRESSING



Straight Strands and Harped Strands at Ends



Straight Strand and Harp Bundles at Harp Down

TABLE OF ECCENTRICITIES

Number of 1/2" Ø Strands per Channel	Final Effective Prestress Force (kips)	$Y_b - e$ at ends (inches)	$Y_b - e$ at harp (inches)
6	141.8	4.25	2.75
8	189.1	5.25	2.81
10	236.4	6.25	2.85
12	283.7	7.25	2.88
14	330.9	8.25	2.89
16	378.2	9.25	2.91
18	425.5	10.25	2.92
20	472.8	11.25	3.13
22	520.0	12.25	3.30
24	567.3	13.25	3.44
26	614.6	14.25	3.56
28	661.9	15.25	3.66
30	709.2	16.25	3.75
32	756.4	17.25	3.83
34	803.7	18.25	3.90